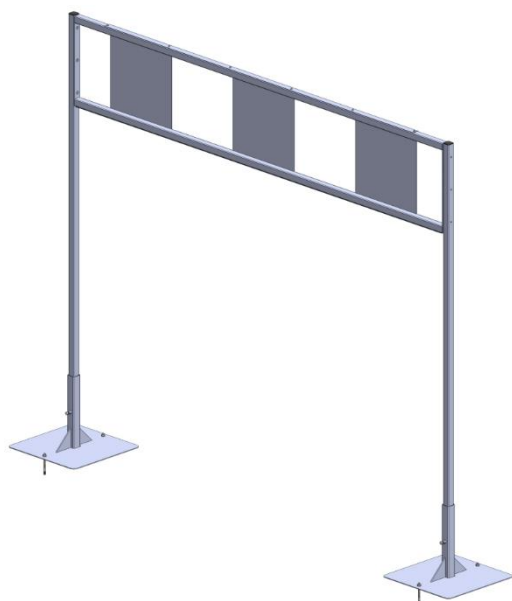
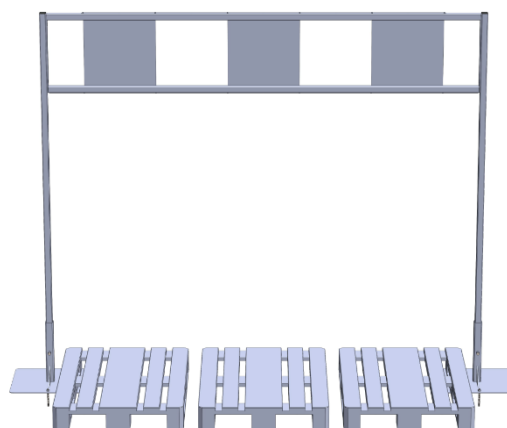


Manual

Pallet POS Holder 2700 mm (3 pallets wide)

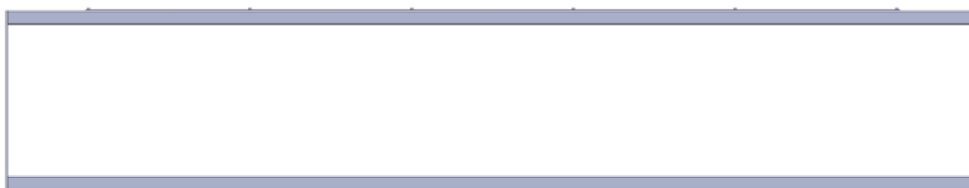


At least two people are required to assemble the pallet frame!



Content

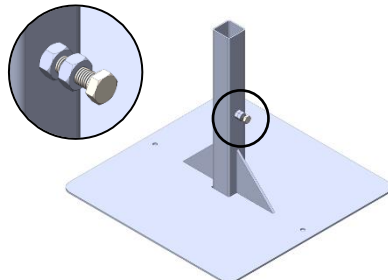
1x



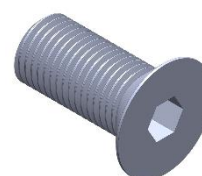
2x



2x



6x



4x



1x

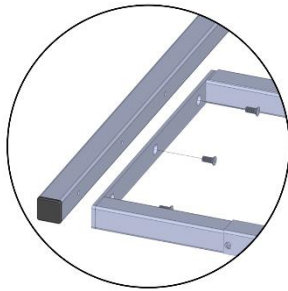


Required tools

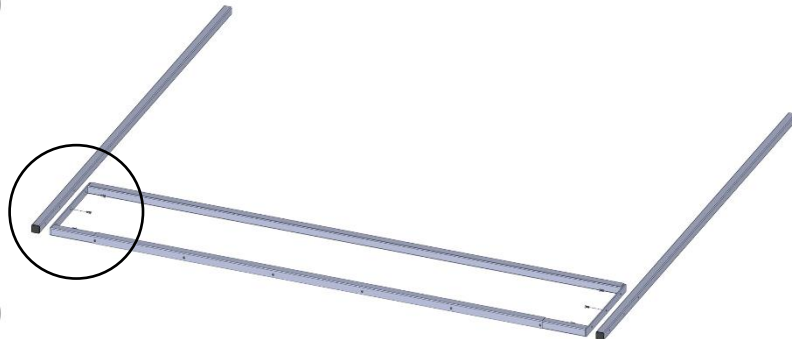
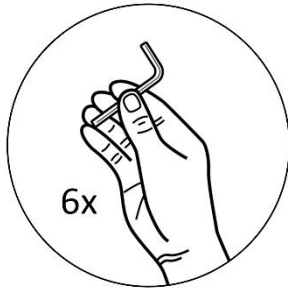
- Drilling machine
- 9 mm Drill
- Spanner
- Hammer

Assembly

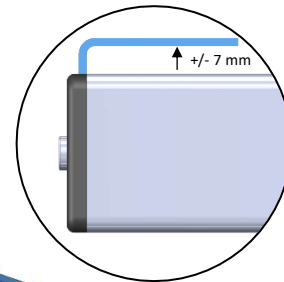
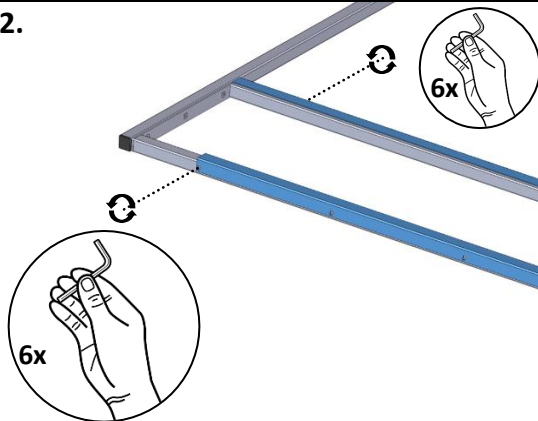
1.



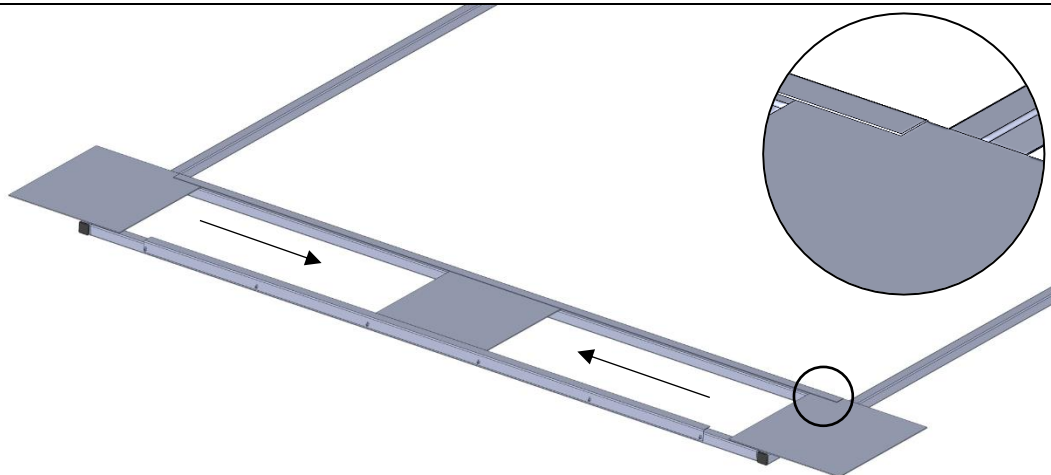
For mounting the frame and placing the boards, place the frame on the ground.



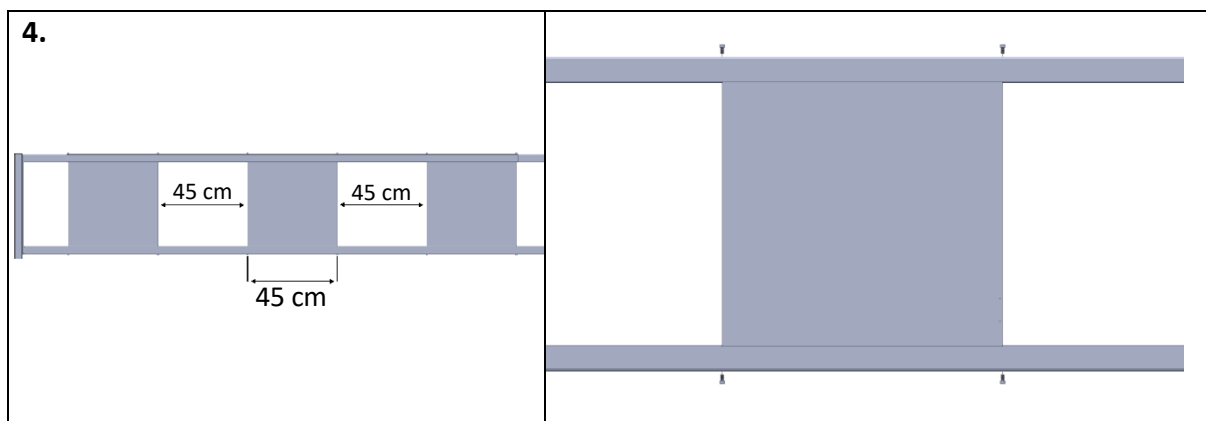
2.



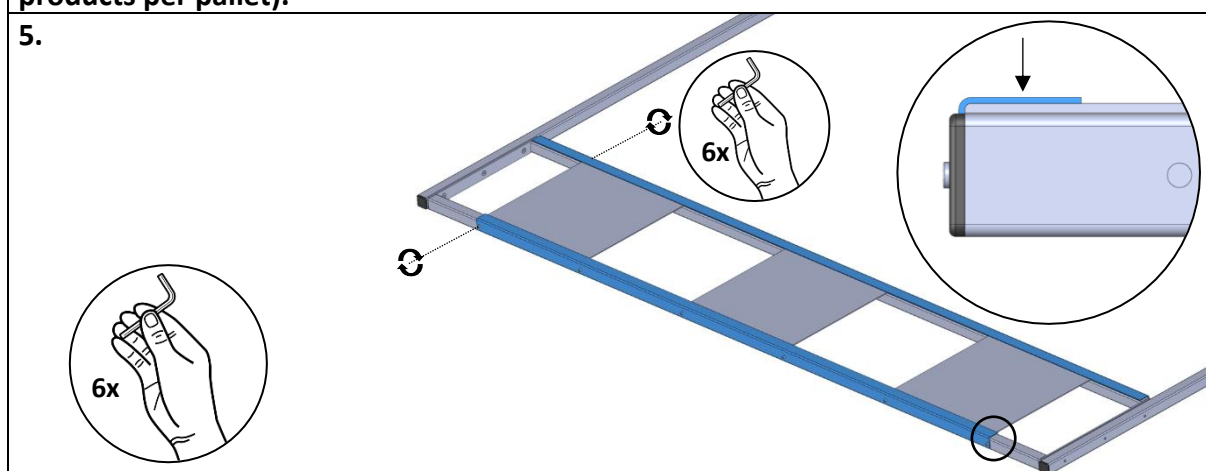
3.



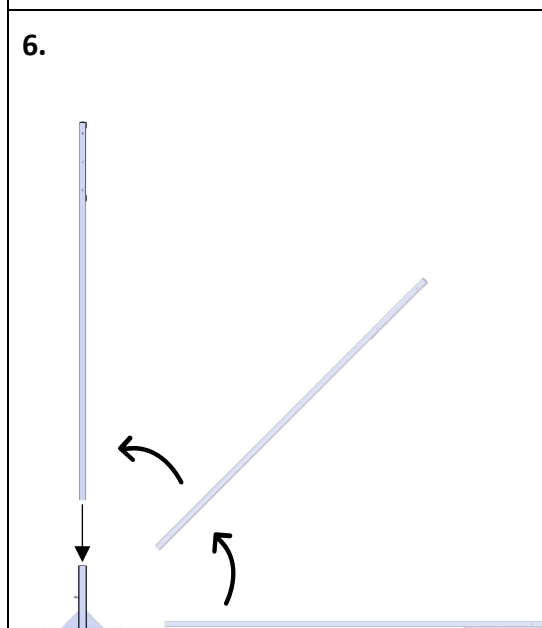
Carefully slide plates between the corner puffs to avoid damage.



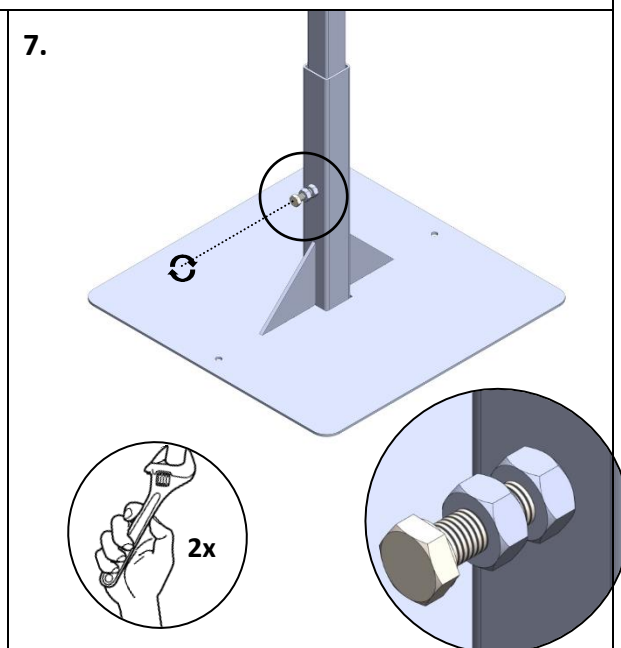
The Allen bolts indicate where the boards should be placed at 3 pallets and 1 variant product per pallet. A maximum of 6 boards fit in the frame (at 3 pallets and 2 variant products per pallet).



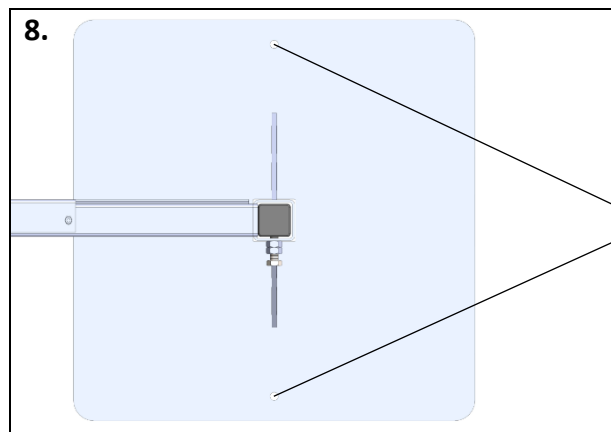
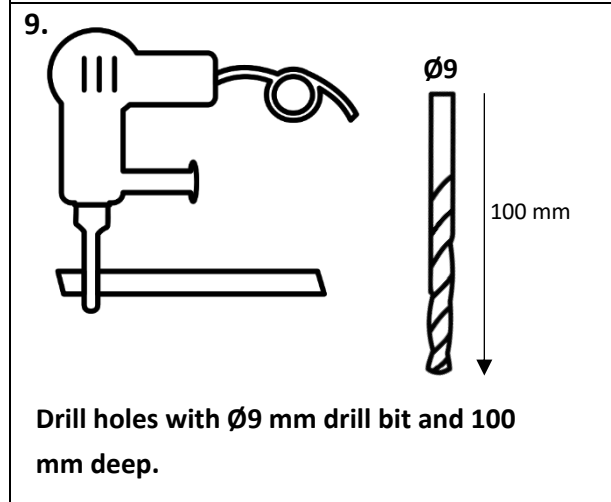
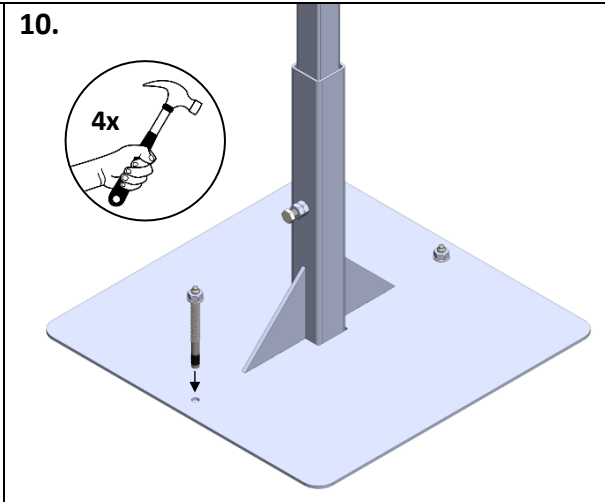
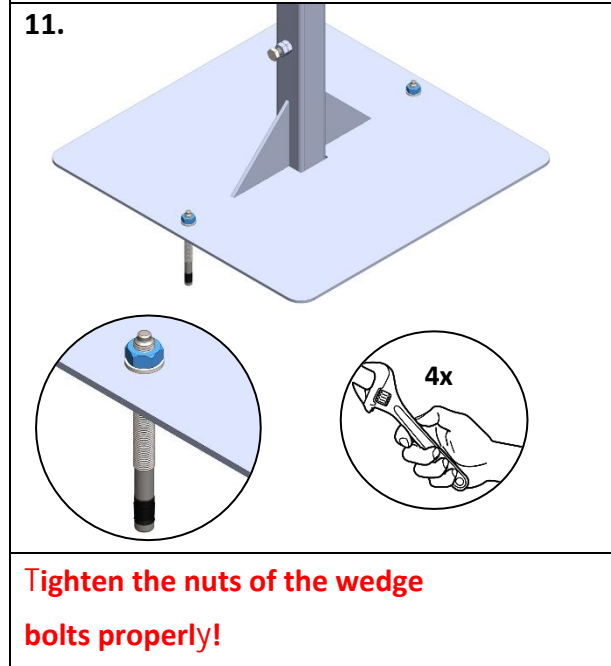
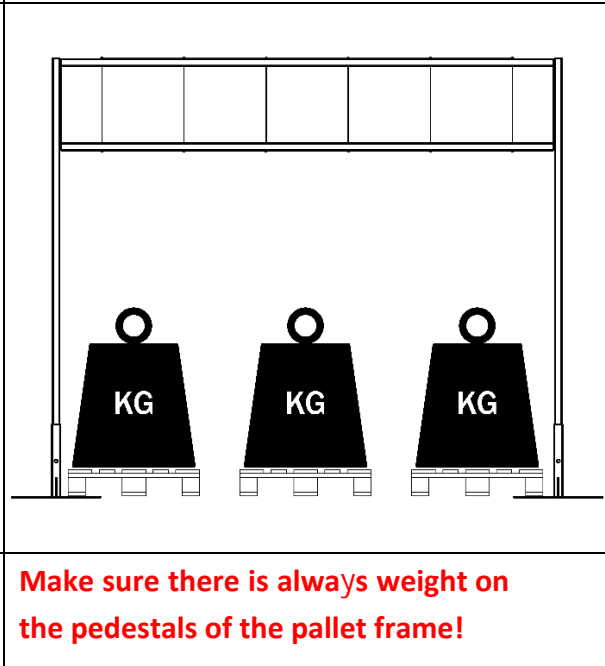
Slide the corner profiles tightly against the boards and retighten the Allen bolts.



Put the frame upright and in the base.



Place the uprights in the bases and tighten the bolts and locknut securely.

<p>8.</p> 	<p>Mark out holes on the floor for installing the wedge bolts.</p>
<p>9.</p>  <p>Drill holes with Ø9 mm drill bit and 100 mm deep.</p>	<p>10.</p> 
<p>11.</p>  <p>Tighten the nuts of the wedge bolts properly!</p>	 <p>Make sure there is always weight on the pedestals of the pallet frame!</p>